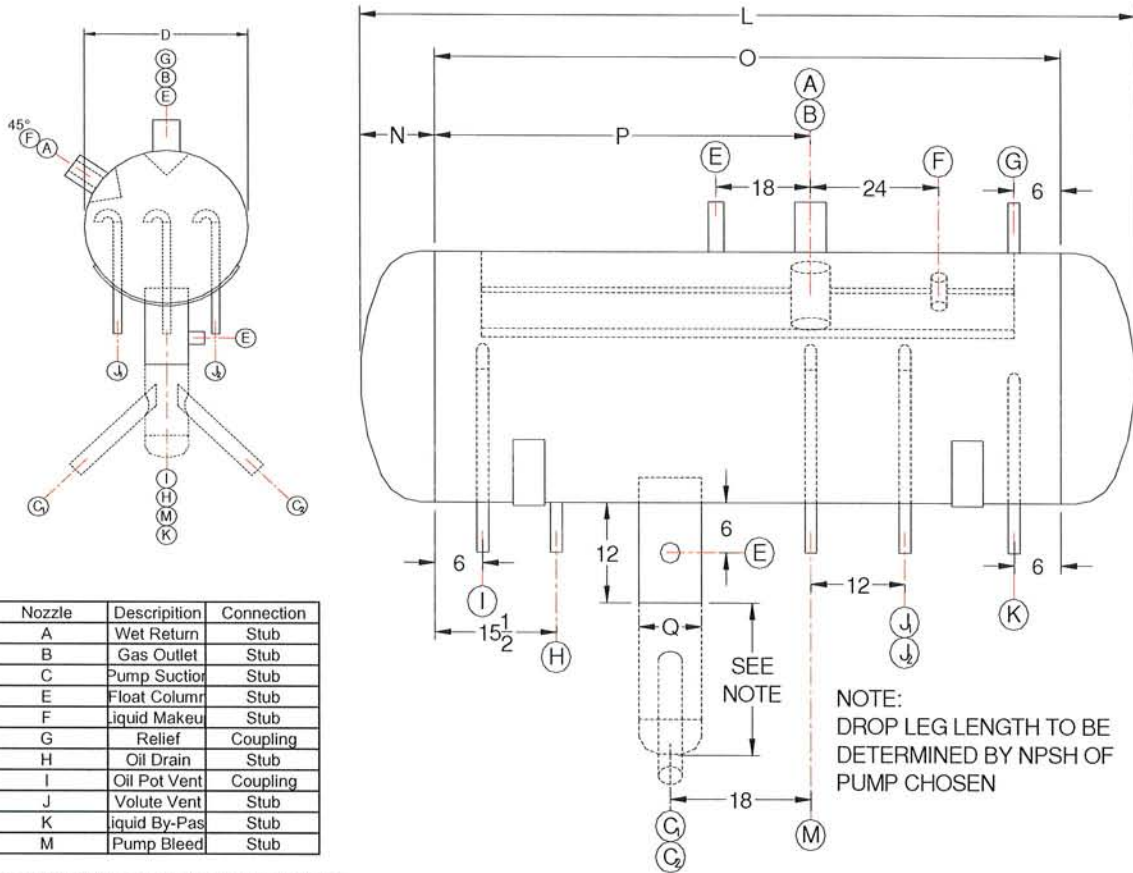




STANDARD HORIZONTAL RECIRCULATOR BARE VESSEL



Nozzle	Description	Connection
A	Wet Return	Stub
B	Gas Outlet	Stub
C	Pump Suction	Stub
E	Float Column	Stub
F	Liquid Makeup	Stub
G	Relief	Coupling
H	Oil Drain	Stub
I	Oil Pot Vent	Coupling
J	Volute Vent	Stub
K	Liquid By-Pas	Stub
M	Pump Bleed	Stub

NOTE:
DROP LEG LENGTH TO BE DETERMINED BY NPSH OF PUMP CHOSEN

HORIZONTAL RECIRCULATOR DIMENSIONS

Model Number	A	B	C	D	E	F	G	H	I	J	K	L	M	N	O	P	Q	Surge Vol. Cu. Ft.	Wt. (Lb)
HRC-24-112	5	4	2-1/2"	24"	1-1/4"	1-1/2"	3/4"	2"	3/4"	3/4"	1"	112-1/2"	3/4"	8-1/4"	96"	48"	6"	8.47	1300
HRC-30-115	6	5	3"	30"	1-1/4"	2"	3/4"	2"	3/4"	3/4"	1-1/4"	115-1/2"	3/4"	9-3/4"	96"	48"	8"	15.85	1575
HRC-36-118	6	6	4"	36"	1-1/4"	2"	3/4"	2"	3/4"	3/4"	1-1/4"	118-1/2"	3/4"	11-1/4"	96"	48"	8"	25.45	2525
HRC-42-145	8	6	4"	42"	1-1/4"	2-1/2"	3/4"	2"	3/4"	3/4"	1-1/2"	145-1/2"	3/4"	12-3/4"	120"	60"	10"	44.95	3500
HRC-48-148	8	8	5"	48"	1-1/4"	3"	3/4"	2"	3/4"	3/4"	1-1/2"	148-1/2"	3/4"	14-1/4"	120"	60"	10"	62.22	4915
HRC-54-152	10	8	5"	54"	1-1/4"	3"	3/4"	2"	3/4"	3/4"	1-1/2"	152"	3/4"	16"	120"	60"	10"	82.2	4720
HRC-60-155	10	8	5"	60"	1-1/2"	3"	3/4"	2"	3/4"	3/4"	1-1/2"	155"	3/4"	17-1/2"	120"	60"	12"	104.65	6440
HRC-72-161	12	10	6"	72"	1-1/2"	4"	1"	2"	3/4"	3/4"	1-1/2"	161"	3/4"	20-1/2"	120"	60"	14"	158.94	9610
HRC-84-167	12	10	8"	84"	1-1/2"	4"	1"	2"	3/4"	3/4"	2"	167"	3/4"	23-1/2"	120"	60"	16"	225.86	11175
HRC-96-172	14	12	8"	96"	1-1/2"	5"	1"	2"	3/4"	3/4"	2"	172-1/2"	3/4"	26-1/4"	120"	60"	16"	307.15	15990

Notes:
 All dimensions and Nozzle sizes are given in inches.
 Please consult factory for certified drawings.
 Surge volume is the amount of area between normal operating level and high level cutout.
 24" thru 48" vessels are designed for 300# DWP -40 +200 Design Temp. Per ASME Section VIII, Division 1
 54" and larger vessels are designed for 250# DWP -40 +200 Design Temp. Per ASME Section VIII, Division 1

HORIZONTAL RECIRCULATOR CAPACITY

Model Number	OPERATING TEMPERATURE										
	TWO STAGE					SINGLE STAGE					
	-50	-40	-30	-20	-10	0	+10	+20	+30	+40	
HRC-24-112	49.8	61.7	74.6	88.3	76.8	88.9	101	115	129	141	152
HRC-30-115	79.5	98.4	119	141	123	142	161	183	206	226	243
HRC-36-118	113	140	170	201	175	202	229	262	294	322	346
HRC-42-145	156	194	234	278	241	279	316	361	405	445	477
HRC-48-148	206	256	309	366	319	368	416	476	534	587	629
HRC-54-152	263	326	394	467	406	470	531	608	682	748	802
HRC-60-155	327	405	490	580	505	584	660	755	847	930	997
HRC-72-161	470	582	704	833	725	839	947	1084	1216	1336	1432
HRC-84-167	639	791	957	1132	985	1140	1287	1473	1653	1815	1946
HRC-96-172	833	1031	1248	1477	1284	1486	1679	1922	2156	2368	2539

NOTES:
 Capacities are given in tons of refrigeration. (R-717)
 Two stage capacities are based on +35 deg. F liquid feed temperature.
 Single stage capacities are based on +95 deg. F liquid feed temperature