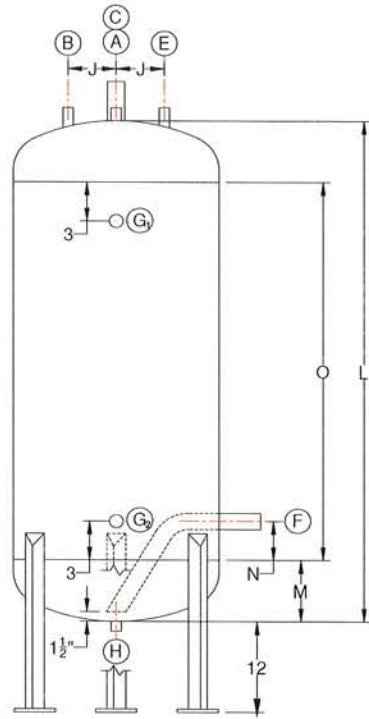
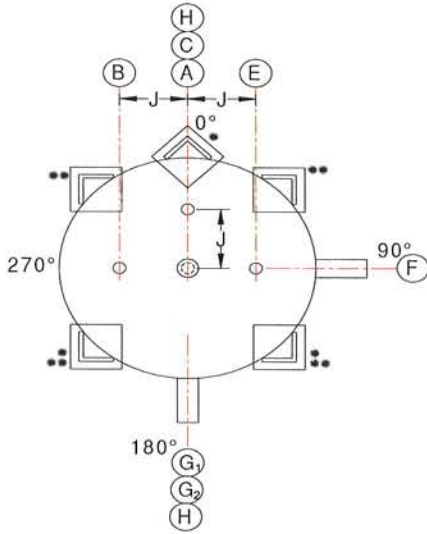




### STANDARD VERTICAL HIGH PRESSURE RECEIVER



**LEGEND**

| Nozzle | Description   | Connection |
|--------|---------------|------------|
| A      | Liquid Inlet  | Stub       |
| B      | Purge         | Coupling   |
| C      | Relief        | Coupling   |
| E      | Equalizer     | Stub       |
| F      | Liquid Outlet | Stub       |
| G      | Level Column  | Stub       |
| H      | Drain         | Coupling   |

24" vessels have 3 legs (0 - 120 - 240) \*  
 30" and larger have 4 legs (45 - 135 - 225 - 315) \* \*

| MODEL #   | A      | B    | C    | D   | E      | F      | G      | H    | L        | M       | N  | O    | Weight (Lb) | Vol. (Cu. Ft.) | R-717 (Lb) |
|-----------|--------|------|------|-----|--------|--------|--------|------|----------|---------|----|------|-------------|----------------|------------|
| VR-24-112 | 2"     | 1/2" | 3/4" | 24" | 3/4"   | 1-1/4" | 1-1/4" | 3/4" | 112-1/2" | 8-1/4"  | 3" | 96"  | 1075        | 26.8           | 726        |
| VR-24-136 | 2"     | 1/2" | 3/4" | 24" | 3/4"   | 1-1/4" | 1-1/4" | 3/4" | 136-1/2" | 8-1/4"  | 3" | 120" | 1265        | 33.0           | 966        |
| VR-30-115 | 2-1/2" | 1/2" | 3/4" | 30" | 1"     | 1-1/4" | 1-1/4" | 3/4" | 115-1/2" | 9-3/4"  | 3" | 96"  | 1375        | 43.2           | 1266       |
| VR-30-139 | 2-1/2" | 1/2" | 3/4" | 30" | 1"     | 1-1/4" | 1-1/4" | 3/4" | 139-1/2" | 9-3/4"  | 3" | 120" | 1615        | 53.0           | 1553       |
| VR-36-118 | 3"     | 1/2" | 3/4" | 36" | 1"     | 1-1/2" | 1-1/4" | 3/4" | 118-1/2" | 11-1/4" | 3" | 96"  | 2175        | 63.8           | 1869       |
| VR-36-142 | 3"     | 1/2" | 3/4" | 36" | 1"     | 1-1/2" | 1-1/4" | 3/4" | 142-1/2" | 11-1/4" | 3" | 120" | 2555        | 78.0           | 2285       |
| VR-42-121 | 3"     | 1/2" | 3/4" | 42" | 1-1/4" | 1-1/2" | 1-1/4" | 3/4" | 121-1/2" | 12-3/4" | 3" | 96"  | 2605        | 88.0           | 2578       |
| VR-42-145 | 3"     | 1/2" | 3/4" | 42" | 1-1/4" | 1-1/2" | 1-1/4" | 3/4" | 145-1/2" | 12-3/4" | 3" | 120" | 3050        | 107.2          | 3140       |
| VR-48-124 | 4"     | 1/2" | 3/4" | 48" | 1-1/4" | 2"     | 1-1/4" | 3/4" | 124-1/2" | 14-1/4" | 3" | 96"  | 3785        | 117.6          | 3445       |
| VR-48-148 | 4"     | 1/2" | 3/4" | 48" | 1-1/4" | 2"     | 1-1/4" | 3/4" | 148-1/2" | 14-1/4" | 3" | 120" | 4415        | 142.8          | 4183       |
| VR-54-128 | 5"     | 3/4" | 3/4" | 54" | 1-1/2" | 2-1/2" | 1-1/4" | 1"   | 128"     | 16"     | 4" | 96"  | 3585        | 151.0          | 4424       |
| VR-54-152 | 5"     | 3/4" | 3/4" | 54" | 1-1/2" | 2-1/2" | 1-1/4" | 1"   | 152"     | 16"     | 4" | 120" | 4170        | 182.8          | 5355       |
| VR-54-176 | 5"     | 3/4" | 3/4" | 54" | 1-1/2" | 2-1/2" | 1-1/2" | 1"   | 176"     | 16"     | 4" | 144" | 4750        | 214.6          | 6287       |
| VR-60-155 | 6"     | 3/4" | 3/4" | 60" | 1-1/2" | 3"     | 1-1/2" | 1"   | 155"     | 17-1/2" | 4" | 120" | 5935        | 228.6          | 6697       |
| VR-60-179 | 6"     | 3/4" | 3/4" | 60" | 1-1/2" | 3"     | 1-1/2" | 1"   | 179"     | 17-1/2" | 4" | 144" | 6740        | 267.8          | 7845       |
| VR-60-203 | 6"     | 3/4" | 3/4" | 60" | 1-1/2" | 3"     | 1-1/2" | 1"   | 203"     | 17-1/2" | 4" | 168" | 7550        | 307.0          | 8994       |
| VR-72-161 | 8"     | 3/4" | 1"   | 72" | 2"     | 4"     | 1-1/2" | 1"   | 161"     | 20-1/2" | 5" | 120" | 8960        | 339.6          | 9949       |
| VR-72-185 | 8"     | 3/4" | 1"   | 72" | 2"     | 4"     | 1-1/2" | 1"   | 185"     | 20-1/2" | 5" | 144" | 10120       | 396.2          | 11607      |
| VR-72-209 | 8"     | 3/4" | 1"   | 72" | 2"     | 4"     | 1-1/2" | 1"   | 209"     | 20-1/2" | 5" | 168" | 11285       | 452.8          | 13265      |
| VR-84-167 | 10"    | 1"   | 1"   | 84" | 2-1/2" | 5"     | 1-1/2" | 1"   | 167"     | 23-1/2" | 6" | 120" | 10975       | 474.8          | 13910      |
| VR-84-191 | 10"    | 1"   | 1"   | 84" | 2-1/2" | 5"     | 1-1/2" | 1"   | 191"     | 23-1/2" | 6" | 144" | 12330       | 551.8          | 16165      |
| VR-84-215 | 10"    | 1"   | 1"   | 84" | 2-1/2" | 5"     | 1-1/2" | 1"   | 215"     | 23-1/2" | 6" | 168" | 13690       | 628.8          | 18421      |
| VR-96-196 | 10"    | 1"   | 1"   | 96" | 3"     | 5"     | 1-1/2" | 1"   | 195-1/2" | 26-1/4" | 6" | 144" | 17200       | 737.6          | 21609      |
| VR-96-220 | 10"    | 1"   | 1"   | 96" | 3"     | 5"     | 1-1/2" | 1"   | 220-1/2" | 26-1/4" | 6" | 168" | 19010       | 838.2          | 24456      |

**Notes:**

All dimensions and Nozzle sizes are given in inches.  
 Volume is given in total cubic feet of vessel  
 Capacity is based on R-717 with vessel 80% full at 96 deg. F

Please consult factory for certified drawings.  
 24" thru 48" vessels are designed for 300# DWP -20 +200 Design Temp per ASME Section VIII, Div. 1  
 54" and larger vessels are designed for 250# DWP -20 +200 Design Temp Per ASME Section VIII, Div. 1