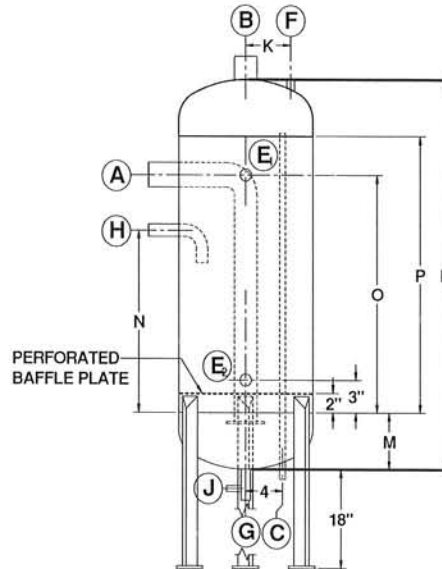
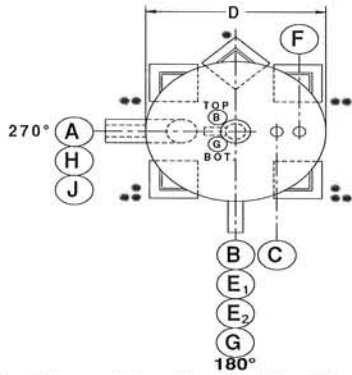




## STANDARD VERTICAL INTERCOOLER



12" thru 24" vessels have 3 legs (0 - 120 - 240)  
 30" and larger have 4 legs (45 - 135 - 225 - 315)

Nozzle	Description	Connection
A	Booster Inlet	Stub
B	Gas Outlet	Stub
C	Oil Pot Vent	Coupling
E	Float Column	Stub
F	Relief	Coupling
G	Oil Pot Drain	Stub
H	Liquid make-up	Stub
J	Drain	Coupling

### VERTICAL INTERCOOLER DIMENSIONS

MODEL #	A	B	C	D	E	F	G	H	J	K	L	M	N	O	P	Q	Weight (Lb)	Surge Vol. Cu. Ft.
VI-12-83	3"	3"	1"	12-3/4"	1-1/4"	1/2"	2"	1"	1"	4.5"	83"	5-1/2"	56"	68"	72"	1"	425	3.19
VI-14-83	3"	3"	1"	14"	1-1/4"	1/2"	2"	1"	1"	4.5"	83-1/2"	5-3/4"	56"	68"	72"	1"	625	4.23
VI-16-84	3"	3"	1"	16"	1-1/4"	1/2"	2"	1-1/4"	1"	4.5"	84-1/2"	6-1/4"	56"	68"	72"	1"	525	5.79
VI-18-85	3"	3"	1"	18"	1-1/4"	1/2"	2"	1-1/4"	1"	4.5"	85-1/4"	6-5/8"	56"	68"	72"	1"	650	7.27
VI-20-86	4"	4"	1"	20"	1-1/4"	1/2"	2"	1-1/4"	1"	5"	86-3/4"	7-3/8"	55"	67"	72"	1"	615	8.99
VI-24-88	4"	4"	1"	24"	1-1/4"	3/4"	2"	1-1/2"	1"	5.5"	88-1/2"	8-1/4"	55"	67"	72"	1"	1035	12.78
VI-30-115	5"	5"	1"	30"	1-1/4"	3/4"	2"	2"	1"	6.5"	115-1/2"	9-3/4"	78"	90"	96"	1"	1550	26.83
VI-36-118	6"	6"	1"	36"	1-1/4"	3/4"	2"	2"	1"	8"	118-1/2"	11-1/4"	72"	90"	96"	1"	2325	38.42
VI-42-121	6"	6"	1"	42"	1-1/4"	3/4"	2"	2-1/2"	1"	8"	121-1/2"	12-3/4"	72"	90"	96"	1"	2750	52.72
VI-48-124	8"	8"	1"	48"	1-1/4"	3/4"	2"	2-1/2"	1"	12"	124-1/2"	14-1/4"	70"	88"	96"	1"	3250	67.27
VI-54-128	8"	8"	1"	54"	1-1/4"	3/4"	2"	3"	1"	12"	128"	16"	70"	88"	96"	1"	3790	85.54
VI-60-131	8"	8"	1"	60"	1-1/4"	3/4"	2"	3"	1"	12"	131"	17-1/2"	70"	88"	96"	1"	4400	106
VI-72-137	10"	10"	1"	72"	1-1/4"	1"	2"	4"	1"	12"	137"	20-1/2"	68"	86"	96"	1"	8100	147.88
VI-84-143	10"	10"	1"	84"	1-1/4"	1"	2"	4"	1"	12"	143"	23-1/2"	68"	86"	96"	1"	10000	201.08
VI-96-148	12"	12"	1"	96"	1-1/4"	1"	2"	4"	1"	12"	148"	26-1/4"	66"	84"	96"	1"	13800	254.36

### Notes:

All dimensions and Nozzle sizes are given in inches.

Please consult factory for certified drawings.

Surge volume is the amount of area between normal operating level and high level cutout.

12" thru 48" vessels are designed for 300# DWP -40 +200 Design Temp. Per ASME Section VIII, Division 1  
 54" and larger vessels are designed for 250# DWP -40 +200 Design Temp. ASME Section VIII, Division 1

### VERTICAL INTERCOOLER CAPACITIES

MODEL #	0	+10	+20	+30	+40
VI-12-83	20.5	23.5	26.3	28.9	31.0
VI-14-83	27.2	31.1	34.9	38.4	41.1
VI-16-84	37.2	42.6	47.8	52.5	56.3
VI-18-85	46.8	53.5	60.0	65.9	70.7
VI-20-86	58.9	67.4	75.6	83.0	89.0
VI-24-88	83.7	95.8	108.0	118.0	127.0
VI-30-115	133.0	152.0	171.0	187.0	200.0
VI-36-118	190.0	218.0	244.0	268.0	287.0
VI-42-121	261.0	298.0	335.0	367.0	394.0
VI-48-124	342.0	392.0	439.0	483.0	517.0
VI-54-128	435.0	498.0	559.0	613.0	658.0
VI-60-131	539.0	617.0	692.0	760.0	815.0
VI-72-137	775.0	887.0	995.0	1093.0	1172.0
VI-84-143	1054.0	1206.0	1353.0	1486.0	1594.0
VI-96-148	1376.0	1575.0	1767.0	1940.0	2081.0

### NOTES:

Capacities are given in tons of refrigeration. (R-717)

Capacities are based on +95 deg. F liquid feed temperature.

Capacities are based on +180 deg. F booster discharge temperature.